

# GX™

The Essential Painting Tool  
for Professionals



## PROFESSIONAL ADVANTAGES

- Ideal for painting in renovation and new home construction projects
- Finish every job, every day thanks to the ProXChange™ fast pump replacement system
- Compact, lightweight and easy to use



# The Essential Painting Tool for Professionals

With the GX™ line of Airless Sprayers, Graco allows professionals to reap the **benefits of AIRLESS Painting:**

- **SPEED AND EFFICIENCY:**  
finish your jobs faster
- **UNIFORM APPLICATION:**  
apply an even layer of paint on every surface
- **BETTER FINISH:**  
does not leave streaks like with a roller or a brush
- **EASY HANDLING:**  
take your sprayer with you wherever you go

Maybe you have not yet had the opportunity to experience the benefits of spraying Airless first hand? Then here is your chance!

*"A true Airless for professionals has never been this affordable."*

If ever you had any reservations about switching from your brush and roller to Airless equipment, we have now made the decision easier! Because of its innovative design, Graco's GX™ line lets you take your first step into Airless spray equipment, with a limited investment.

Are you an Airless painter? You already know you can finish more jobs quicker, with a better finish... What we CAN tell you is that with Graco's GX™ line you will now be able to transfer these benefits to even more jobs!

Why just stick to Airless painting for exterior jobs, or bigger commercial projects? Why not use Airless for interior renovation jobs as well? Start now with the GX™ Airless paint sprayers that are:

- still the professional equipment you're used to working with, but in a more compact and easier to carry version
- designed to offer their benefits at an all time low investment
- ideal to spray your second colour and increase your productivity on small job sites



### ProX™ Power-Piston Pump

- Exceptional durability and long life piston pump
- Exclusive, lifetime lubricated wiper pad for maintenance-free operation
- Modular pump components for easy maintenance

### Flexible Clear Tubing

Easy to use and clean. Spray water or solvent-based paints directly from containers from 1 - 30 litres.



### Convenient Drip Cup

Eliminates the risk of paint drips.



**Professional SG3™ Gun**  
with RAC X™ tip, 15 m hose

### Direct Immersion Design

Draws paint directly from paint buckets.



### Extreme Portability

Easily carry your sprayer around with you

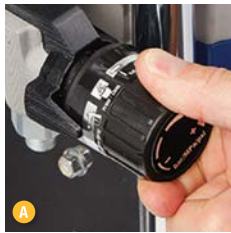




**Hopper (5.7 litre) – Toolless removal**

- Ideal for small amounts of material
- Lid included for spill-proof portability

**Professional FTx™-E Gun**  
with RAC X™ tip, 7.5 m hose



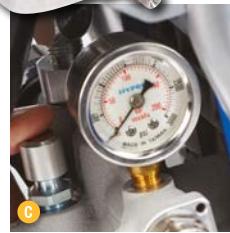
**Adjustable Pressure Control**

Allows you to spray or roll a wide range of coatings.



**PushPrime™**

Assures fast priming every time — loosens stuck inlet check valves in case of priming issues.



**Pressure Gauge**

Professional oil-filled pressure gauge



**Transform your GX unit into the optimal renovation painting tool**

**JetRoller™**

**Extend your sprayer**

Use your preferred roller and combine rolling & spraying into one operation. Extend your sprayer with the JetRoller and minimize application time when combining rolling and spraying into one operation.

**Benefits:**

- Uses commonly available 18 or 25 cm roller covers.
- Completes large jobs in half the time of traditional methods
- Reduces overspray
- Eliminates reaching
- Eliminates climbing and continually reaching up and down

Kit includes a lightweight detachable roller frame, 50 cm extension, CleanShot™ Shut-Off™ valve, Inline™ gun, spray tip and guard.

**ProXChange™ Pump Replacement System**

**The Easy & Fast Pump Repair System**

In four simple steps, you can remove and replace the pump cartridge:

- No tools needed to remove pump
- Simply lift door to remove pump



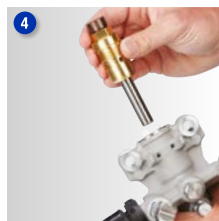
Slide & lift open access door



Remove pump section



Use frame hex fitting to loosen pump and remove cartridge



Install new cartridge and replace pump



**! TIP**

**Replacement Pump**  
Avoid downtime by keeping a spare replacement pump to hand !



# The Essential Painting Tool for Professionals

## Technical Specifications

All units ship complete and ready to spray:

Model Name:	GX™ FF	GX™ 21
<b>Part Numbers:</b> for EURO Version (230 V)	CEE VDO cord / <b>17G184</b>	CEE VDO cord / <b>17G183</b>
for Multicord Version (230 V)	Multi x4: IT-CH-DK-UK / <b>17H222</b>	Multi x4: IT-CH-DK-UK / <b>17H218</b>
Max. Working Pressure - bar	207 bar	207 bar
Max. Tip Size - 1 Gun	0.019"	0.021"
Max. Fluid Flow - lpm / (gpm)	1.5 / (0.38)	1.8 / (0.47)
Frame Design	Hopper Stand	DI Stand
Suction System	5.7 litre Hopper, solvent resistant	White, solvent resistant
InstaClean™ Pump Filter	None	40 mesh
Hose	3/16" x 7.5 m BlueMax™ II	1/4" x 15 m Duraflex™
Gun / Guard / Tip	FTx™-E / RAC X™ / FFLP210	SG3™ / RAC X™ / LP517 / FFLP310
Gun Filter	100 mesh	60 mesh
Gun Style	2-Finger	4-Finger



## Accessories

Get the most out of your equipment, using our professional accessories:



### Guns

- 17J261 FTx™-E gun, 2-Finger, with RAC X™ 210 tip
- 17J910 SG3™ gun, 4-Finger, with RAC X™ 515 tip

### Filters

#### Gun Filter (for GX™ FF - FTx™-E Gun)

- 257129 30 mesh, grey
- 287032 60 mesh, black
- 287033 100 mesh, blue
- 257130 200 mesh, red

#### Gun Filter (for GX™ 21 - SG3™ Gun)

- 218131 50 mesh, blue
- 218133 100 mesh, orange
- 256975 150 mesh, red

#### Material Filter InstaClean™

- 257094 40 mesh, inline filter

### Hoses

- 214698 3/16" x 7.5 m (BlueMax™ II)
- 247340 1/4" x 15 m (Duraflex™)

### Tips & Guards

- LPXXX Green RAC X™ low pressure tip
- FFLPXXX Green RAC X™ Fine Finish low pressure tip
- WA12XX RAC X™ Wide RAC™, for big surfaces
- 246215 RAC X™ guard

### Other

- 17J444 Carrying strap
- 17H170 Hopper, 5.7 litre (GX™ FF only)
- 253574 Pump Armor™, 1 litre, cleaning fluid



### ProXChange™ Pump Kit - Blister Pack

- 24Y472 Blister pack, fits all GX units

### JetRoller™ System

#### with Inline™ Gun

- 24V490 Roller 18 cm
- 24V491 Roller 25 cm

#### without Inline™ Gun

- 24V492 Roller 18 cm
- 24V493 Roller 25 cm

### CleanShot™ RAC X™ Pole Gun

- 287026 90 cm
- 287027 180 cm

### Rollers with InLine™ Gun

- 6880095 Exterior, 30 cm fixed
- 098084 Exterior, 90-180 cm telescopic
- 098085 Exterior, 45-90 cm telescopic
- 245397 Interior, 50 cm fixed

### RAC X™ Tip Extensions

- 287019 25 cm
- 287020 40 cm
- 232123 1 m Heavy Duty extension
- 287021 50 cm
- 287022 75 cm

### Whips (230 bar)

- 238358 3/16" x 0.9 m
- 238359 3/16" x 1.8 m
- 238959 3/16" x 1.4 m

### ProGuard™ +

- 24W090 230 V, CEE 7/7, shuko
- 24W755 230 V, IEC320, multicord

All written and visual data contained in this document are based on the latest product information available at the time of publication. Graco reserves the right to make changes at any time without notice.

Graco is certified ISO 9001.

GRACO DISTRIBUTION BV Industrieterrein Oude Bunders • Slakweidestraat 31 • B-3630 Maasmechelen  
Tel: +32 (89) 770 700 • Fax: +32 (89) 770 777 • <http://www.graco.com>

©2016 Graco Distribution BV 300735ENEU (rev.C) 02/20 Printed in Europe.  
All other brand names or marks are used for identification purposes and are trademarks of their respective owners.  
For more information on Graco's intellectual property, see [www.graco.com/patent](http://www.graco.com/patent) or [www.graco.com/trademarks](http://www.graco.com/trademarks).

