



# ELECTRIC SPRAYERS

Graco's Complete Line of Professional  
Electric Airless Sprayers



PROVEN QUALITY. LEADING TECHNOLOGY.



# THERE IS NOTHING LIKE A GRACO ELECTRIC SPRAYER

Experienced contractors know the difference. Graco professional electric sprayers are solid investments that perform reliably, year after year.

## TRUST YOUR BUSINESS AND REPUTATION TO GRACO

Graco is committed to providing the highest quality electric airless sprayers available, backed by the industry's best warranty.

## AMERICAN BUILT QUALITY SINCE 1926

100% factory-tested and field-proven Graco professional electric sprayers are manufactured, assembled and supported in the USA.

## INDUSTRY-LEADING WARRANTY

Behind every Graco sprayer is the industry's strongest warranty. You may never use Graco's warranty — but if you do, we will be there.



## GRACO-ONLY SOLUTIONS THAT KEEP YOU SPRAYING



PATENTED

### THE LONGEST LASTING PUMPS EVER BUILT

- Longest life in the industry with Vortex™ rotating piston rod
- 6X more gallons sprayed between repacks
- Extends pump rod life by 3X — delivering the industry's lowest cost of ownership



PATENT PENDING

### STREAMLINE YOUR BUSINESS WITH BLUELINK™ SYSTEM

- Track every sprayer — exact location and hourly productivity
- Know job progress — on-demand productivity facts and reporting from anywhere
- Maximize uptime — set maintenance schedules, alerts, and jobsite notes



PATENTED

### THE EASIEST MAINTENANCE

- Swap your pump in minutes with no tools
- Eliminate costly jobsite downtime
- Easier and faster than ever to service your sprayer



GRACO EXCLUSIVE

### PRECISION SPRAYING CONTROL

- Precision pressure control that delivers a consistent spray fan without pressure fluctuations
- Ideal for Low Pressure tips commonly used for fine finish work and low overspray applications
- Monitors sprayer gallons, hours, and spray pressure



PATENT PENDING

### EXCLUSIVE BREAKTHROUGH CORDLESS TECHNOLOGY

- Only high-performance cordless sprayer
- Spray up to 3 gallons on a single DEWALT® FlexVolt® battery charge
- Expanded application capability with freedom from power cords, outlets and generators



GRACO EXCLUSIVE

### EASY HOSE MANAGEMENT

- Deploy and rewind up to 300 feet of hose in seconds
- No twisting, kinking, or coiling
- Use only the hose you need — the rest stays on the reel





# BREAKTHROUGH ENDURANCE™ VORTEX MAXLIFE® AND MAXLIFE EXTREME™ TECHNOLOGY (PATENTED)

## THE LONGEST LASTING PUMPS EVER BUILT



**Endurance Chromex™ Pump**  
Lasts 2X longer than competing pumps



**Endurance Vortex MaxLife Pump**  
6X longer between repacks



**Endurance Vortex MaxLife Extreme Pump**  
Extends pump rod life by 3X — delivering the industry's lowest cost of ownership



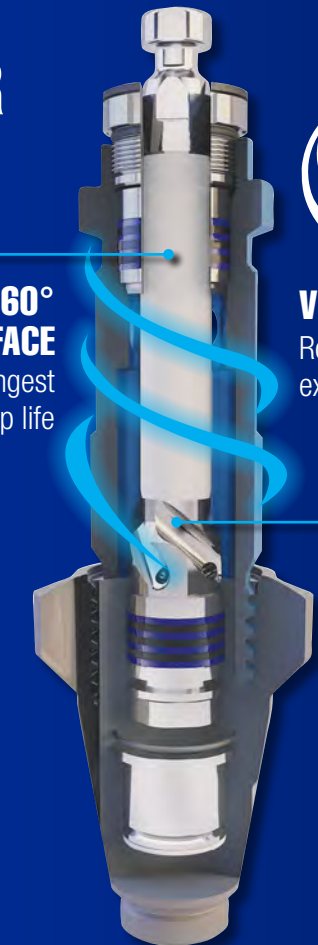
## THE BEST JUST GOT BETTER VORTEX ROTATING PISTON TECHNOLOGY KEEPS YOU SPRAYING

(PATENT PENDING)  
Built with Graco exclusive EXTREME ROD that is an abrasion-resistant composite to deliver the most durable, hardest wear surface possible

6X more gallons sprayed between repacks — Extreme Composite extends pump rod life by 3X, delivering the industry's lowest cost of ownership



**360° WEAR SURFACE**  
Delivers the longest pump life



(PATENTED)  
**VORTEX TECHNOLOGY**  
Rotating rod for extended life

**HELICAL DESIGN**  
Delivers high-velocity flow to rotate pump rod as you spray

### SPRAYS THE WIDEST RANGE OF COATINGS

- Oversized clearances for maximum performance
- Maximum flow with heavy materials

### EASIEST SERVICE IN THE INDUSTRY

#### QuikPak™ Cartridge System

- Repack the entire pump in minutes

#### ProConnect™ 2 Pump Replacement

- Complete no-tools pump replacement system

#### QuikAccess™ Intake Foot Valve

- Clear debris faster with easy inlet ball access

### OLD WAY



VS



### NEW WAY

Modular pre-oiled cartridge packings install correctly every time

## QUIKPAK CARTRIDGE REPAIR SYSTEM (PATENT PENDING)

### REPACK YOUR PUMP IN MINUTES



1) Insert pre-oiled packing cartridge assembly



2) Remove disposable clip



3) Assemble pump

QuikPak available on Ultra Max™ II 695-1595 Sprayers.



# STAY IN CONTROL WITH BLUELINK

BlueLink connects the people and equipment that drive your business in a completely new way. Whether on the jobsite, at the office, or anywhere in between, BlueLink provides the critical information you need every day — including real-time jobsite access, instant maintenance alerts, on-demand productivity reports and much more!

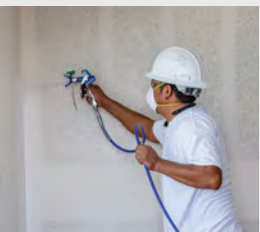


## HOW IT WORKS:



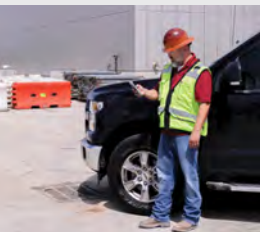
**1**

**DATA IS STORED ON YOUR SPRAYER**



**2**

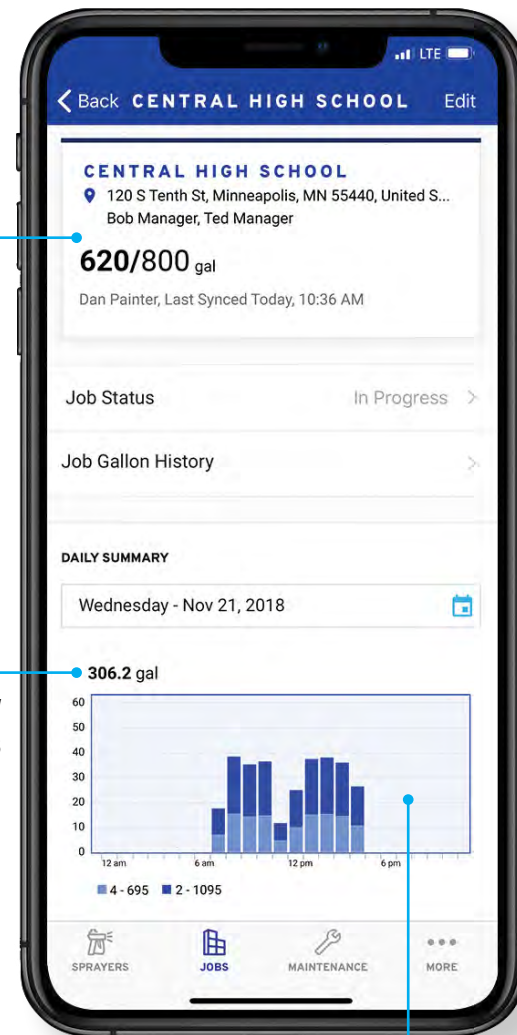
**AUTOMATICALLY UPDATES EACH TIME YOUR EMPLOYEES ARE NEAR THE SPRAYER**



**3**

**EXPERIENCE PROFIT DRIVING RESULTS THROUGH BETTER JOB MANAGEMENT**

- FREE TO USE—NO MONTHLY FEES
- TRACK YOUR WHOLE ELECTRIC FLEET
- INCLUDED ON MOST ELECTRIC MODELS
- SELECT FROM 13 LANGUAGES

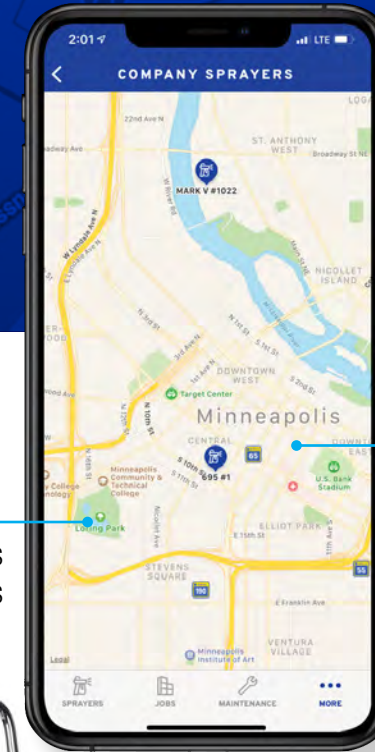


Compare bid accuracy—know productivity facts from anywhere!

Manage your crew and their supplies

## KNOW JOB PROGRESS

Monitor hourly productivity to ensure job is on-time with the needed materials



Make fewer trips to jobsites

## LOCATE EVERY SPRAYER

Know exact locations of your sprayers and hourly productivity

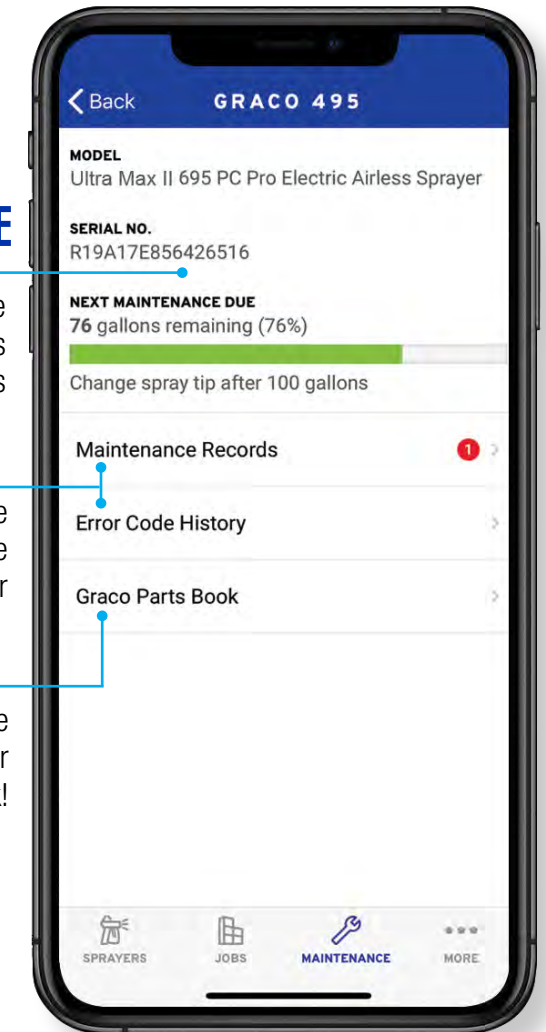


## MAXIMIZE UPTIME

Monitor preventative maintenance schedules and receive alerts

Access to complete historical maintenance records on every sprayer

Easily look up service parts on your sprayer with Graco PartsBook!



## GET STARTED TODAY

Get BlueLink working for your business today. Download the BlueLink app now!





# CHOOSE THE RIGHT ELECTRIC SPRAYER

Our mission is to fit you to the sprayer that is sized for the work you do to get the job done right, every time.



## CURRENT AND FUTURE JOBSITE FACTS TO CONSIDER WHEN SELECTING YOUR GRACO ELECTRIC SPRAYER:

- How many gallons per week will you spray?
- What hose lengths will you use?
- How many guns will you use? What tip sizes?
- What types of materials will you spray?
- What types of jobs will you bid?
- What power source do you have available?



## FIND THE SPRAYER THAT FITS

			STANDARD	PROCONTRACTOR™	STANDARD	PROCONTRACTOR	IRONMAN
			Ultra Max II 650 PC Pro Ultra Max II 695 Ultra Max II 795	Ultra Max II 1095 Ultra Max II 1595			
<b>RECOMMENDED SPRAYER</b>	390™ PC Corded <b>NEW!</b> 390 PC Cordless Ultra® 395 PC	Ultra Max II 490 PC Pro Ultra Max II 495 PC Pro Ultra Max II 595 PC Pro					
	<b>LOW</b> Up to 50 gallons per week	<b>MEDIUM</b> 50-100 gallons per week	<b>HIGH</b> 100-200 gallons per week	<b>HIGH</b> Over 200 gallons per week			
	<b>LOW / MEDIUM</b> Up to 200 ft of hose	<b>LOW / MEDIUM</b> Up to 200 ft of hose	<b>HIGH</b> Up to 300 ft of hose	<b>HIGH</b> Up to 300 ft of hose			
<b>PRODUCTION NEEDS</b>	<b>LOW</b> 1 gun Up to 0.023 tip / Up to 0.54 gpm	<b>MEDIUM</b> 1 gun Up to 0.027 tip / Up to 0.70 gpm	<b>HIGH</b> Up to 2 guns Up to 0.033 tip / Up to 1.10 gpm	<b>HIGHEST</b> Up to 3 guns Up to 0.039 tip / Up to 1.35 gpm			
	<b>JOB TYPES</b> Small Residential, Repaint/ Remodel, Property Maintenance	<b>LIGHT / MEDIUM</b> Medium Residential, Repaint/Remodel, Property Maintenance, Light Commercial	<b>LIGHT / HEAVY</b> Interior/Exterior, Residential, Light Commercial	<b>HEAVY DUTY</b> Exterior Residential, Heavy Commercial, Industrial			
	<b>MATERIALS</b> Lacquers and Stains, Interior/Exterior Latex, Enamels, Acrylics	<b>LIGHT / MEDIUM</b> Lacquers and Stains, Interior/ Exterior Latex, Enamels, Acrylics, Oil-Based Primers	<b>LIGHT / HEAVY</b> Interior/Exterior Latex, Oil-Based Primers, Acrylics, Block Fillers	<b>HEAVY DUTY</b> Interior/Exterior Latex, Oil-Based Primers, Epoxies, Block Fillers, Dryfall, Elastomers			
<b>POWER SOURCE</b>	Select Models available in Corded & Cordless	Corded	Corded	Corded			



# SMALL ELECTRIC SPRAYERS

## SMALL SIZE, LARGE CAPABILITY—NOW AVAILABLE IN CORDED OR CORDLESS

Proven power and performance in a highly portable configuration that delivers legendary Graco reliability to make sure you always get the job done faster and easier.



### 390 PC CORDED FEATURES:



#### DURABLE ENDURANCE PUMP

- Lasts 2X longer than competing pumps
- Long life V-Max Blue™ Packings, Chromex rod, and hardened stainless steel cylinder
- Faster cleaning with the QuikAccess intake valve

#### EASY MAINTENANCE AND LESS CLOGGING

##### Easy Out™ Pump Filter

- Exclusive inside-out filtering process ensures a quality finish
- Large filtration area reduces tip clogs

#### ELIMINATE COSTLY DOWNTIME

##### ProConnect One-Part Pump Replacement System

- Pump swaps in minutes — no tools, pins, or parts to lose

#### THE LONGEST LASTING DRIVE

##### Advantage Drive™

- Hardened steel gears provide extremely quiet operation and a lifetime warranty



390 PC Corded Stand 17C310

### ULTRA 395 INCLUDES ALL FEATURES FROM THE 390 PC CORDED PLUS:

#### GET MORE WORK DONE

##### Durable TEFC DC Motor

High torque produces the most power possible for all painting applications

#### EVEN PRESSURE DELIVERY

##### SmartControl™

- Constantly monitors performance and adjusts motor speed to match your tip size and spraying needs
- Ideal for RAC X™ Low Pressure Spray Tips that deliver less overspray, softer edges and longer tip life

#### ALL-DAY COMFORT AND CONTROL

##### New Contractor PC™ Spray Gun

- Lightest weight gun in its class
- Up to 50% lighter trigger pull force
- E-Z Fit™ adjustable trigger length
- Complete no-tools gun rebuild in seconds with ProConnect



Ultra 395 PC Stand 17E844



## THE MOST POWERFUL CORDLESS SPRAYER EVER BUILT DELIVERS THE FREEDOM TO SPRAY EVERY JOB FASTER

### 390 PC CORDLESS INCLUDES ALL 390 PC CORDED FEATURES PLUS:

#### PERFECT AIRLESS FINISH

##### RAC X™ Low Pressure (LP) Switchtip™

- Spray at lower pressure for extended battery runtime, less overspray, longest tip life

#### ULTIMATE POWER AND PORTABILITY

##### Powered By DeWALT

- High capacity 6ah FlexVolt batteries — spray up to 3 gallons per battery charge
- Delivered complete with two batteries
- Fan-cooled fast charger—recharges battery in under 60 minutes

#### PROVEN PERFORMANCE AND EXTENDED BATTERY LIFE

##### Brushless DC Motor

- Powerful brushless DC motor provides extended battery run time
- Lightweight, compact design allows for increased portability
- Lightest professional electric sprayer on the market



390 PC Cordless Stand 25T804



390 PC Corded

390 PC CORDLESS

### YOU CHOOSE YOUR POWER SOURCE!

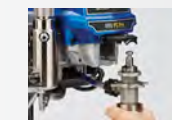
- ✓ BOTH Deliver Superior Performance
- ✓ BOTH Spray the Widest Range of Architectural Coatings

## FINISH EVERY JOB, EVERY DAY

Graco Endurance pumps deliver the industry's longest life and will require occasional service. Quickly changing a pump on the job can guarantee a productive day of spraying. Graco ProConnect makes pump swaps fast and easy.



1) Loosen the clamping nut



2) Open door and remove pump



3) Remove hose and suction tube

#### FAST PUMP REMOVAL

- 1-minute jobsite replacement
- Keeps you spraying instead of waiting for service
- No pins or parts to lose!



### GRACO KEEPS YOU ON THE JOB SPRAYING!

From the longest life Endurance Pump or the Express Pump for lighter use, Graco's Pump Replacement System is the only one-part pump replacement solution on the market today. Eliminate downtime—pick up a spare today!

DEMAND GENUINE GRACO PARTS FOR THE LONGEST LIFE. ACCEPT NO SUBSTITUTES.



# MIDSIZE ELECTRIC SPRAYERS INCREASED PRODUCTIVITY — UNMATCHED RELIABILITY

Graco's midsize electric airless sprayers make it easier to get more work done in a day with increased flow and production rates.

# THE LIGHTEST WEIGHT 2-GUN ELECTRIC AIRLESS SPRAYER

## ULTRA MAX II 490-595 PC PRO MODELS:

### INCREASED SPRAY CONSISTENCY

#### SmartControl

- Constantly monitors performance and adjusts motor speed to match your spraying needs
- Measures sprayer gallons, hours, and pressure
- Provides support messages and diagnostic support

### STREAMLINE YOUR BUSINESS

#### BlueLink Job and Sprayer Management System

- Track every sprayer
- Know job progress
- Maximize uptime



### ALL-DAY COMFORT AND CONTROL

#### New Contractor PC Spray Gun

- Lightest weight gun in its class
- Up to 50% lighter trigger pull force
- E-Z Fit adjustable trigger length
- Complete no-tools gun rebuild in seconds with ProConnect

### GET MORE WORK DONE

#### MaxPower™ Motor and Advantage drive

- Creates more torque and delivers maintenance-free performance

#### FastFlush™ High-Flow Cleaning System

- 4X faster cleaning with 1/2 the water

### DURABLE ENDURANCE PUMP

- Lasts 2X longer than competing pumps
- Long life V-Max Blue™ Packings, Chromex rod, and hardened stainless steel cylinder
- Faster cleaning with the QuikAccess intake valve

### THE LONGEST LASTING DRIVE

#### Advantage Drive™

- Hardened steel gears provide extremely quiet operation and a lifetime warranty

### EASY MAINTENANCE AND LESS CLOGGING

#### Easy Out™ Pump Filter

- Exclusive inside-out filtering process ensures a quality finish
- Large filtration area reduces tip clog

### ELIMINATE COSTLY DOWNTIME

#### ProConnect One-Part Pump Replacement System

- Pump swaps in minutes — no tools, pins, or parts to lose

### EASY TRANSPORT

- Only 34 lbs (Stand model)
- Kickstand for easy one-person bucket changes (Hi-Boy only)



Ready to Spray: Complete with Contractor PC Spray Gun, 50 ft Blue Max II hose, and RAC X SwitchTip

Ultra Max II 490 PC Pro Stand 17E852



Ready to Spray: Complete with Contractor PC Spray Gun, 50 ft Blue Max II Hose, and RAC X SwitchTip

Ultra Max II 650 PC Pro Hi-Boy 19Y128

## ULTRA MAX II 650 PC PRO FEATURES:

### DURABLE ENDURANCE PUMP

#### Endurance Piston Pump

- Lasts 2X longer than competing pumps
- Larger intake to handle heavier coatings

#### ProConnect

- Pump swaps in minutes with no tools

### 2-GUN CAPABILITY

#### 2-Hose Connection Manifold

- Supports up to .019" tips
- EasyOut filter provides easy maintenance and less clogging

### INCREASED SPRAY CONSISTENCY

#### SmartControl with Digital Display

- Even pressure delivery on every job
- Constantly monitors performance and adjusts motor speed to match your tip size and spraying needs
- FastFlush delivers 4X faster cleaning with 1/2 the water

### ALL-DAY COMFORT AND CONTROL

#### Contractor PC Spray Gun

- Lightest weight gun in its class
- Up to 50% lighter trigger pull force

### EASY TRANSPORT AND MANEUVERING

#### Small Compact Frame

- Balanced design
- Chrome over steel construction withstands jobsite abuse

### GET MORE WORK DONE

#### MaxPower Motor and Advantage Drive

- High-torque brushless design with a Lifetime Warranty
- The longest lasting drive with a Lifetime Warranty

#### FastFlush High-Flow Cleaning System

- 4X faster cleaning with 1/2 the water

## UPGRADE TO AN ULTRA MAX II 650 PC PRO FOR A LOWER COST OF OWNERSHIP

- Endurance pump lasts 2X longer than competing pumps

- Chromex piston rod with longer stroke
- Chrome plated stainless steel sleeve
- V-Max Blue™ packings

- Eliminate downtime with ProConnect — fast and easy on-the-job repair

- MaxPower motor and Advantage Drive offer maintenance-free performance and lifetime warranty



NEW Ultra Max II 650 PC Pro Pump

MIDSIZE ELECTRIC MODELS	MAX TIP SIZE	MAX GPM	STAND	HI-BOY	LO-BOY
Ultra Max II 490 PC Pro	.023	.54	17E852	17E854	17E856
Ultra Max II 495 PC Pro	.025	.60	17E855	17E857	17E856
Ultra Max II 595 PC Pro	.027	.70		17E859	17E858



MIDSIZE ELECTRIC MODELS	MAX TIP SIZE	MAX GPM	HI-BOY	LO-BOY
Ultra Max II 650 PC Pro	.029 in	.80	19Y128	19Y128



# CHOOSE THE RIGHT SERIES FOR ALL YOUR APPLICATIONS

Graco's large electric sprayers deliver the highest production rates to handle the most demanding jobs and applications.

## Choose the Right Series of Large Electric Sprayers for Your Business

Only Graco is committed to professional painting contractors by offering three different series of large electric airless sprayers.



### EVERYDAY RELIABILITY

#### Small Residential and Repainting Contractor

- Painting multiple days a week
- Typically working on smaller jobs
- Don't need a lot of extra features



### WORK SMARTER, FINISH MORE JOBS

#### Large Residential and Commercial Contractor

- Painting every day—frequently from job to job
- Tackling medium to large projects
- Requiring features to get you to the next jobsite faster



### BEYOND JOBSITE TOUGH

#### Large Commercial and Industrial Contractor

- Painting continuously in less-than-ideal conditions
- Working on long-duration projects with large material volumes
- Require extreme durability and reliability



graco.com/ElectricSprayers



Ultra Max II 695 Standard Series 17E574

Ready to Spray: Complete with Contractor PC Spray Gun, 50 ft Blue Max II hose, and RAC X SwitchTip



# STANDARD SERIES EVERYDAY RELIABILITY

Larger painting jobs demand the proven quality and performance of Graco's Standard Series large electric sprayers to deliver a job well done, every time.

### DURABLE ENDURANCE PUMP

#### Endurance Chromex Piston Pump

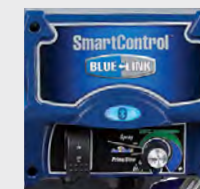
- Lasts 2X longer than competing pumps
- Repack the pump in minutes with the new QuikPak Cartridge System
- Faster cleaning with the QuikAccess intake foot valve



### PRECISION PRESSURE CONTROL

#### New SmartControl with ProGuard™ Protection System

- Lowest dead band at any pressure delivers a consistent spray fan without pressure fluctuation
- ProGuard prevents electrical damage from extreme jobsite power conditions
- WatchDog™ Pump Protection System automatically prevents pump damage if the material supply is too low



### STREAMLINE YOUR BUSINESS

#### BlueLink Job and Sprayer Management App

- Track every sprayer
- Know job progress
- Maximize uptime



### THE LONGEST LASTING DRIVE

#### Advantage Drive

Hardened steel gears provide extremely quiet operation and a lifetime warranty

### ALL-DAY COMFORT AND CONTROL

#### New Contractor PC Spray Gun

- Lightest weight gun in its class
- Up to 50% lighter trigger pull force with E-Z Fit adjustable trigger length
- Complete no-tools gun rebuild in seconds with ProConnect cartridge

### MAINTENANCE-FREE HIGH-PRESSURE DUMPING CAPABILITY

#### Heavy-Duty Prime Valve

### FAST CLEANING NOW EVEN FASTER

#### New FastFlush 2 System

- Clean the pump 6X faster using 1/2 the water
- High-velocity fluid flow delivered with 60% higher motor speed

### GET MORE WORK DONE

#### MaxPower Motor

- Proven performance for all painting applications
- High-torque brushless design with a Lifetime Warranty

### EASY MAINTENANCE AND LESS CLOGGING

#### Easy Out Filters

- Exclusive inside-out filtering process ensures a quality finish
- Vertical design for less mess



LARGE ELECTRICS	MAX TIP SIZE	MAX GPM	LO-BOY	HI-BOY
Ultra Max II 695	.031	.95	17E572	17E574
Ultra Max II 795	.033	1.10		17E579
Ultra Max II 1095	.035	1.20		17E583
Ultra Max II 1595	.039	1.35		17E589



# PROCONTRACTOR SERIES

## WORK SMARTER, FINISH MORE JOBS



The ProContractor Series is designed to deliver speed and performance so you can get to the next jobsite faster and increase your profits.



### SUPERIOR PUMP LIFE

#### New Endurance Vortex MaxLife Piston Pump

Breakthrough Vortex Rotating Rod Technology Keeps You Spraying:

- Oversized passages for high-velocity flow to rotate rod for even wear
- Lasts 6X longer between repacks with innovative MaxLife technology
- Repack pump in minutes with new QuikPak cartridge repair system

### ELIMINATE COSTLY DOWNTIME

#### ProConnect 2 Pump Replacement System

- Exchange pump in minutes — pinless design needs no tools

### EASY HOSE MANAGEMENT

#### QuikReel Hose Management System

- Deploy and rewind up to 300 feet of hose in seconds
- No twisting, kinking, or coiling
- Use only the hose you need — the rest stays on the reel

### DURABLE FILTRATION

#### Crushproof Inlet Strainer

- Stands up to harsh impacts to maintain flow through filter



Ready to Spray: Complete with Contractor PC Spray Gun, 50 ft Blue Max II hose, and RAC X SwitchTip

Ultra Max II 795 ProContractor 17E582

#### ProContractor Series sprayers also include all Standard Series features:

- NEW BlueLink Job and Sprayer Management App
- NEW SmartControl with ProGuard
- NEW FastFlush 2
- NEW Contractor PC Spray Gun
- Easy Out Filter Manifold
- Precision Advantage Drive
- MaxPower Motor
- Heavy-Duty Prime Valve
- Rugged, Durable Cart Design



PROCONTRACTOR SERIES LARGE ELECTRICS	MAX TIP SIZE	MAX GPM	PART #
Ultra Max II 695	.031	.95	17E577
Ultra Max II 795	.033	1.10	17E582
Ultra Max II 1095	.035	1.20	17E585
Ultra Max II 1595	.039	1.35	17E596



# IRONMAN SERIES

## BEYOND JOBSITE TOUGH

IronMan Series electric sprayers are built to routinely handle the rugged demands of large commercial and industrial jobs — day in and day out.



Ready to Spray: Complete with Contractor PC Spray Gun, 50 ft Blue Max II hose, and RAC X SwitchTip

Ultra Max II 1595 IronMan 17E584

#### IronMan Series sprayers also include all Standard Series features:

- NEW BlueLink Job and Sprayer Management App
- NEW SmartControl with ProGuard
- NEW FastFlush 2
- NEW Contractor PC Spray Gun
- Easy Out Filter Manifold
- Precision Advantage Drive
- MaxPower Motor
- Heavy-Duty Prime Valve
- Rugged, Durable Cart Design



IRONMAN SERIES LARGE ELECTRICS	MAX TIP SIZE	MAX GPM	PART #
Ultra Max II 1095	.035	1.20	17E586
Ultra Max II 1595	.039	1.35	17E594



### THE LONGEST LIFE EVER

#### New Endurance Vortex MaxLife Extreme Piston Pump

Breakthrough Vortex Rotating Rod Technology Keeps You Spraying:

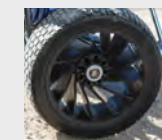
- Oversized passages for high-velocity flow to rotate rod for even wear
- 6X more gallons sprayed between repacks. Extreme rod extends pump rod life by 3X
- Graco exclusive abrasion-resistance composite delivers the most durable wear surface
- Repack pump in minutes with new QuikPak cartridge repair system



### ELIMINATE COSTLY DOWNTIME

#### ProConnect 2 Pump Replacement System

- Exchange pump in minutes — pinless design needs no tools



### NEVER HAVE A FLAT AGAIN

#### Flat Proof Tires

- Tires can't be punctured by nails, screws, or other sharp debris



### DURABLE FILTRATION

#### Crushproof Inlet Strainer

- Stands up to harsh impacts to maintain filtering and flows



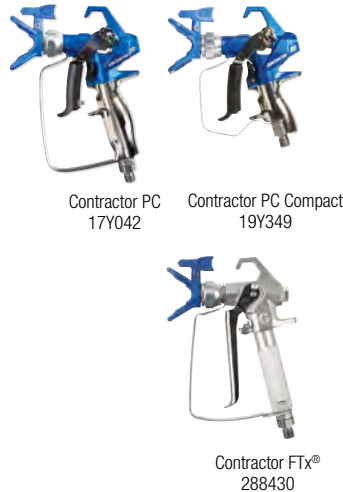
# ACCESSORIES

## SPEND LESS TIME, MAKE MORE MONEY

Maximize your performance and get to the next job faster by customizing your sprayer with proven Graco accessories.

### AIRLESS SPRAY GUNS

- The Contractor PC guns are the industry's lightest and most comfortable guns delivering contractor-preferred Graco durability
- Choose between the Standard or NEW Compact size to experience the lightest weight, 50% lighter trigger pull force
- Fast, on-the-job gun rebuilds with the exclusive ProConnect replacement cartridge



Contractor PC  
17Y042

Contractor PC Compact  
19Y349

Contractor FTx®  
288430

PART #	DESCRIPTION
19Y349	Contractor PC Compact Gun (2-finger trigger) with RAC X LTX 517 Tip and Guard
19Y350	Contractor PC Compact Gun (2-finger trigger) with RAC X LP 517 Tip and Guard
19Y443	Contractor PC Compact Gun (2-finger trigger) with RAC X FFLP 210 Tip and Guard
17Y042	Contractor PC Gun (adjustable trigger) with RAC X LTX 517 Tip and Guard
17Y043	Contractor PC Gun (adjustable trigger) with RAC X LP 517 Tip and Guard
17Y470	Contractor PC Gun (adjustable trigger) with RAC X FFLP 210 Tip and Guard
288429	FTx Gun (2-finger trigger) with RAC X 515 Tip and Guard
288430	FTx Gun (4-finger trigger) with RAC X 515 Tip and Guard
246240	Silver Plus Gun with RAC X 517 Tip and Guard
246468	Flex Plus™ Gun with RAC X 517 Tip and Guard
287023	3 ft (0.9 m) Pole Gun with Contractor Inline Valve, CleanShot Valve, RAC X 517 Tip and Guard
287024	6 ft (1.8 m) Pole Gun with Contractor Inline Valve, CleanShot Valve, RAC X 517 Tip and Guard

### JETROLLER™ SYSTEMS\* AND ACCESSORIES

\*All systems include Roller Handle Assembly, RAC X Guard, 12 in (305 mm) Roller Handle Extension, 20 in (51 cm) Heavy-Duty Extension, and CleanShot™ Shut-Off Valve. (Roller cover not included.)



Roller Handle Assembly,  
18 in (457 mm)  
24W130

JetRoller System,  
9 in (230 mm)  
Contractor In-Line Valve  
24U172

PART #	DESCRIPTION
24U170	*9 in (230 mm) Roller Assembly with RAC X LTX 721 Tip
24U172	*9 in (230 mm) Roller Assembly, RAC X LTX 721 Tip and Contractor In-Line Valve
24V926	*9.5 in (241 mm) Roller Assembly, RAC X LTX 721 Tip and Contractor In-Line Valve
24W128	*18 in (457 mm) Roller Assembly, RAC X WR 1223 Tip and Contractor In-Line Valve
24V829	9 in (230 mm) Roller Handle Assembly
24V937	9.5 in (241 mm) Roller Handle Assembly (Canada)
24W130	18 in (457 mm) Roller Handle Assembly
24V832	12 in (305 mm) Roller Handle Extension
224399	45° Adapter
238359	3/16 in x 6 ft (4.8 mm x 1.8 m) BlueMax II Whip Hose



### BATTERY & CHARGER

PART #	DESCRIPTION
20A162	DeWALT 20V/60V MAX* FlexVolt 6ah Battery
20A165	DeWALT Fan-Cooled Fast Charger



### DIGITAL & LED DISPLAYS

- Simple to use and easy to install display featuring pressure display and error code self diagnostics
- Bright easy-to-read LED display shows pressure readout, job/lifetime, gallon counter and self diagnostics



PART #	DESCRIPTION
287098	Digital Display for Ultra 395 PC — Does not include BlueLink
287904	Digital Display for Ultra Max II 490/495/595/650 PC Pro — Does not include BlueLink
17H886	LED Display for SmartControl fits Ultra Max II 695/795/1095/1595 Fits all SmartControl models. Includes BlueLink and WatchDog feature. Only available on existing models built with BlueLink.



17H171

### HOPPER KITS

- Ideal for spraying small amounts of material
- Smooth inside cleans up fast
- Attaches to sprayer in place of inlet suction tube

### SIPHON KITS

- Pump materials directly from containers



PART #	DESCRIPTION
17H171	1.5 Gallon (5.7 liter) Hopper Assembly, lid included (390 PC-595 PC Pro)
246386	5 Gallon (18.9 liter) Siphon Set (390-595)
248216	5 Gallon (18.9 liter) Siphon Set (650/695/795/1095/1595)
248317	30/55 Gallon (113.5/208 liter) Siphon Set (650/695/795/1095/1595)

### FILTERS AND INLET STRAINER



PART #	DESCRIPTION
287032	60 Mesh FTx/Contractor/Contractor PC Gun Filter
287033	100 Mesh FTx/Contractor/Contractor PC Gun Filter
19Y355	60 Mesh Contractor PC Compact Gun Filter
19Y356	100 Mesh Contractor PC Compact Gun Filter
246425	Easy Out Filters — Short, Gray, 30 Mesh (390-650)
246384	Easy Out Filters — Short, Black, 60 Mesh (390-650)
246382	Easy Out Filters — Short, Blue, 100 Mesh (390-650)
246383	Easy Out Filters — Short, Red, 200 Mesh (390-650)
246385	Inlet Strainer (390-595)
244071	Easy Out Filters — Long, Gray, 30 Mesh (695-1595)
244067	Easy Out Filters — Long, Black, 60 Mesh (695-1595)
244068	Easy Out Filters — Long, Blue, 100 Mesh (695-1595)
244069	Easy Out Filters — Long, Red, 200 Mesh (695-1595)
235004	Inlet Strainer — Standard Series (650)
189920	Inlet Strainer — Standard Series (695-1595)
15V573	Crushproof Inlet Strainer — ProContractor and IronMan Series (695-1595)
287253	Parts ToolBox (695-1595)



### FLAT PROOF TIRES

Never Have a Flat Again

- Tires can't be punctured by nails, screws, or other sharp debris



graco.com/accessories

**FOR PART NUMBERS AND MORE DETAILS  
ON ALL AIRLESS ACCESSORIES:**

Visit [graco.com/accessories](http://graco.com/accessories) or ask your local authorized Graco Distributor



# SPRAY WITH CONFIDENCE

## Finish Every Job, Every Time

Downtime is costly. With the Endurance Advantage Program, you'll never need to worry about it again. Depending on the sprayer you purchase:

Receive up to 70% OFF the list price of an Endurance Pump  
 OR — Receive a FREE Repair Kit if you'd rather repack your own pump.

Follow the registration instructions included with your sprayer.



For more information visit [graco.com/endurance](http://graco.com/endurance)



## INDUSTRY-LEADING WARRANTY PROTECTION

Every Graco electric sprayer is backed by the industry's best warranty coverage.

### LIFETIME ELECTRIC MOTOR WARRANTY\*

If the motor fails from normal use, we'll replace it under warranty for the original owner for the life of the sprayer.

### LIFETIME DRIVETRAIN WARRANTY\*

If the drivetrain fails from normal use, we'll replace it under warranty for the original owner for the life of the sprayer.

### 30-DAY "JUST ADD PAINT" REPLACEMENT GUARANTEE\*



Dissatisfied? Simply return the sprayer to the place you bought it within 30 days. They'll either exchange it for an identical sprayer or you can trade up to a larger sprayer at an additional cost.

### 3-YEAR WARRANTY\*

Coverage against defects in materials and workmanship on the entire sprayer.

### DOWNTIME ELIMINATOR PROGRAM\*

Part needed for a warranty repair not in stock at your distributor? Get FREE next business day air freight delivery when distributor orders the part by 2 p.m. CT.

### CONVENIENT SERVICE

Graco offers more than 5,500 authorized distributor locations in North America and over 700 locations to administer warranty repair.

### 3-YEAR DEWALT DEFECT WARRANTY\*

Coverage against defects in materials and workmanship on batteries and charger

\*NORTH AMERICA ONLY. See your local Graco Distributors for country specifics.

		390 PC CORDED	390 PC CORDLESS	ULTRA 395 PC	ULTRA MAX II 490 PC PRO	ULTRA MAX II 495 PC PRO	ULTRA MAX II 595 PC PRO	ULTRA MAX II 650 PC PRO
SPECIFICATIONS	Maximum Tip Size	0.021	0.021	0.023	0.023	0.025	0.027	0.029
	Maximum psi (bar)	3300 (227)	3300 (227)	3300 (227)	3300 (227)	3300 (227)	3300 (227)	3300 (227)
	Maximum gpm (lpm)	0.47 (1.8)	0.47 (1.8)	0.54 (2.0)	0.54 (2.0)	0.60 (2.3)	0.70 (2.6)	0.80 (3.0)
	Motor hp	5/8 DC	5/8 DC	7/8 TEFC DC	1.0 Brushless DC	1.2 Brushless DC	1.6 Brushless DC	1.8 Brushless DC
	Weight lb (kg)	33 lbs (15 kg)	31 (14) Stand	42 (19) Stand	34 (15) Stand	34 (15) Stand	72 (33) Hi-Boy	77 (35) Hi-Boy
	Gun Support: 1 Gun 2 Gun	0.021 -	0.021 -	0.023 -	0.023 -	0.025 -	0.027 -	0.029 0.019



		SMALL ELECTRICS			MIDSIZE ELECTRICS			
MODEL	Cart Design—Part Number	Stand 17C310 Hi-Boy 17C313	Stand - 25T804 Hi-Boy - 25T805	Stand 17E844 Hi-Boy 17E846 Lo-Boy 17E845	Stand 17E852 Hi-Boy 17E854 Lo-Boy 17E853	Stand 17E855 Hi-Boy 17E857 Lo-Boy 17E856	Hi-Boy 17E859 Lo-Boy 17E858	Hi-Boy 19Y128 Lo-Boy 19Y129
FEATURES	Endurance Pump	●	●	●	●	●	●	●
	NEW! BlueLink System				●	●	●	●
	Motor	DC	Brushless DC	TEFC DC	MaxPower Brushless	MaxPower Brushless	MaxPower Brushless	MaxPower Brushless
	Advantage Drive	●	●	●	●	●	●	●
	Easy Out (60 Mesh)	●	●	●	●	●	●	●
	SmartControl	Electronic	Electronic	●	●	●	●	●
	Fast Flush				●	●	●	●
	ProConnect	●	●	●	●	●	●	●
	Gun	FTx	FTx	Contractor PC	Contractor PC	Contractor PC	Contractor PC	Contractor PC
	Tip	RAC X LTX 515	RAC X LP 515	RAC X LTX 517	RAC X LTX 517	RAC X LTX 517	RAC X LTX 517	RAC X LTX 517
Hose	1/4 in x 50 ft (6.4 mm x 15 m) Blue Max II Airless	1/4" x 50' (6.4 mm x 15 m) BlueMax II Airless	1/4 in x 50 ft (6.4 mm x 15 m) Blue Max II Airless	1/4 in x 50 ft (6.4 mm x 15 m) Blue Max II Airless	1/4 in x 50 ft (6.4 mm x 15 m) Blue Max II Airless	1/4 in x 50 ft (6.4 mm x 15 m) Blue Max II Airless	1/4 in x 50 ft (6.4 mm x 15 m) Blue Max II Airless	
Power Source	Corded	(2) DEWALT 60V Max FlexVolt 6.0 ah Batteries and (1) Fan-Cooled Fast Charger	Corded	Corded	Corded	Corded	Corded	
REPLACEMENT PUMPS	Endurance Pump	17C487	17C487	17C487	17C487	17C487	17C487	19Y298
	Express Pump	17J552	17J552	17J552	17J552	17J552	17J552	-
WEAR PARTS	Repair Kit	18B260	18B260	18B260	18B260	18B260	18B260	18B260
	Rod	24W617	24W617	24W617	24W617	24W617	24W617	19Y268
	Cylinder	24W619	24W619	24W619	24W619	24W619	24W619	19Y267
	Sleeve	-	-	-	-	-	-	19Y269
	Intake Seat Kit	246429	246429	246429	246429	246429	246429	-
MANUAL	Operation / Parts	334567	3A8179	3A6519	3A6491	3A6491	3A6491	3A6491





		ULTRA MAX II 695
SPECIFICATIONS	Maximum Tip Size	0.031
	Maximum psi (bar)	3300 (227)
	Maximum gpm (lpm)	0.95 (3.6)
	Weight lb (kg)	93 (42) Standard
	Gun Support: 1 Gun 2 Guns 3 Guns	0.031 0.023 -



		ULTRA MAX II 795
	Maximum Tip Size	0.033
	Maximum psi (bar)	3300 (227)
	Maximum gpm (lpm)	1.10 (4.1)
	Weight lb (kg)	98 (44) Standard
	Gun Support: 1 Gun 2 Guns 3 Guns	0.033 0.025 0.019



		ULTRA MAX II 1095
	Maximum Tip Size	0.035
	Maximum psi (bar)	3300 (227)
	Maximum gpm (lpm)	1.20 (4.5)
	Weight lb (kg)	120 (55) Standard
	Gun Support: 1 Gun 2 Guns 3 Guns	0.035 0.027 0.021



		ULTRA MAX II 1595
	Maximum Tip Size	0.039
	Maximum psi (bar)	3300 (227)
	Maximum gpm (lpm)	1.35 (5.1)
	Weight lb (kg)	125 (56) Standard
	Gun Support: 1 Gun 2 Guns 3 Guns	0.039 0.029 0.023



SERIES TYPE		STANDARD	PROCONTRACTOR
MODEL	Cart Design – Part Number	Hi-Boy–17E574 Lo-Boy–17E572	17E577
	PUMP	Type	Endurance
Rod		Chromex	MaxLife
Sleeve		Hardened SST	MaxLife
Removal		QuikChange	ProConnect 2
FEATURES	<b>NEW!</b> Endurance Pump	●	● Vortex
	<b>NEW!</b> BlueLink Management App	●	●
	MaxPower Brushless DC Motor (hp)	● (2.0)	● (2.0)
	Advantage Drive	●	●
	Easy Out (60 Mesh)	●	●
	<b>NEW!</b> SmartControl	●	●
	<b>NEW!</b> FastFlush 2	●	●
	WatchDog	●	●
	QuikReel		●
	ProConnect 2		●
	<b>NEW!</b> Flat Proof Tires		●
	<b>NEW!</b> Crushproof Inlet Strainer		●
	<b>NEW!</b> Contractor PC Gun	●	●
	Tip	RAC X LTX 517	RAC X LTX 517
Hose	1/4 in x 50 ft (6.4 mm x 15 m) Blue Max II Airless	1/4 in x 50 ft (6.4 mm x 15 m) Blue Max II Airless	
WEAR PARTS	Replacement Pump	16Y598	17H823
	Repair Kit	17H838	17H841
	Rod	248206	17H876
	Sleeve	248209	17H864
	Intake Seat Kit	239922	239922
MANUAL	Operation and Parts	3A6342	3A6342
	Pump	3A6584	3A6583

SERIES TYPE		STANDARD	PROCONTRACTOR
	Model	17E579	17E582
	Type	Endurance	Endurance Vortex
	Rod	Chromex	MaxLife
	Sleeve	Hardened SST	MaxLife
	Removal	QuikChange	ProConnect 2
	<b>NEW!</b> Endurance Pump	●	● Vortex
	<b>NEW!</b> BlueLink Management App	●	●
	MaxPower Brushless DC Motor (hp)	● (2.2)	● (2.2)
	Advantage Drive	●	●
	Easy Out (60 Mesh)	●	●
	<b>NEW!</b> SmartControl	●	●
	<b>NEW!</b> FastFlush 2	●	●
	WatchDog	●	●
	QuikReel		●
	ProConnect 2		●
	<b>NEW!</b> Flat Proof Tires		●
	<b>NEW!</b> Crushproof Inlet Strainer		●
	<b>NEW!</b> Contractor PC Gun	●	●
	Tip	RAC X LTX 517	RAC X LTX 517
	Hose	1/4 in x 50 ft (6.4 mm x 15 m) Blue Max II Airless	1/4 in x 50 ft (6.4 mm x 15 m) Blue Max II Airless
	Replacement Pump	16Y598	17H823
	Repair Kit	17H838	17H841
	Rod	248206	17H876
	Sleeve	248209	17H864
	Intake Seat Kit	239922	239922
	Operation and Parts	3A6342	3A6342
	Pump	3A6584	3A6583

SERIES TYPE		STANDARD	PROCONTRACTOR	IRONMAN
	Model	17E583	17E585	17E586
	Type	Endurance	Endurance Vortex	Endurance Vortex
	Rod	Chromex	MaxLife	MaxLife EXTREME
	Sleeve	Hardened SST	MaxLife	MaxLife
	Removal	QuikChange	ProConnect 2	ProConnect 2
	<b>NEW!</b> Endurance Pump	●	● Vortex	● Vortex
	<b>NEW!</b> BlueLink Management App	●	●	●
	MaxPower Brushless DC Motor (hp)	● (2.4)	● (2.4)	● (2.4)
	Advantage Drive	●	●	●
	Easy Out (60 Mesh)	●	●	●
	<b>NEW!</b> SmartControl	●	●	●
	<b>NEW!</b> FastFlush 2	●	●	●
	WatchDog	●	●	●
	QuikReel		●	●
	ProConnect 2		●	●
	<b>NEW!</b> Flat Proof Tires		●	●
	<b>NEW!</b> Crushproof Inlet Strainer		●	●
	<b>NEW!</b> Contractor PC Gun	●	●	●
	Tip	RAC X LTX 517	RAC X LTX 517	RAC X LTX 517
	Hose	1/4 in x 50 ft (6.4 mm x 15 m) Blue Max II Airless	1/4 in x 50 ft (6.4 mm x 15 m) Blue Max II Airless	1/4 in x 50 ft (6.4 mm x 15 m) Blue Max II Airless
	Replacement Pump	16Y706	17H824	17H826
	Repair Kit	17H839	17H842	17H843
	Rod	248207	17H877	17H879
	Sleeve	248210	257031	257031
	Intake Seat Kit	244199	244199	17H888
	Operation and Parts	3A6342	3A6342	3A6342
	Pump	3A6584	3A6583	3A6583

SERIES TYPE		STANDARD	PROCONTRACTOR	IRONMAN
	Model	17E589	17E596 (Canada) 17E593	17E594
	Type	Endurance	Endurance Vortex	Endurance Vortex
	Rod	Chromex	MaxLife	MaxLife EXTREME
	Sleeve	Hardened SST	MaxLife	MaxLife
	Removal	QuikChange	ProConnect 2	ProConnect 2
	<b>NEW!</b> Endurance Pump	●	● Vortex	● Vortex
	<b>NEW!</b> BlueLink Management App	●	●	●
	MaxPower Brushless DC Motor (hp)	● (2.8)	● (2.8)	● (2.8)
	Advantage Drive	●	●	●
	Easy Out (60 Mesh)	●	●	●
	<b>NEW!</b> SmartControl	●	●	●
	<b>NEW!</b> FastFlush 2	●	●	●
	WatchDog	●	●	●
	QuikReel		●	●
	ProConnect 2		●	●
	<b>NEW!</b> Flat Proof Tires		●	●
	<b>NEW!</b> Crushproof Inlet Strainer		●	●
	<b>NEW!</b> Contractor PC Gun	●	●	●
	Tip	RAC X LTX 517	RAC X LTX 517	RAC X LTX 517
	Hose	1/4 in x 50 ft (6.4 mm x 15 m) Blue Max II Airless	1/4 in x 50 ft (6.4 mm x 15 m) Blue Max II Airless	1/4 in x 50 ft (6.4 mm x 15 m) Blue Max II Airless
	Replacement Pump	16Y706	17H824	17H826
	Repair Kit	17H839	17H842	17H843
	Rod	248207	17H877	17H879
	Sleeve	248210	257031	257031
	Intake Seat Kit	244199	244199	17H888
	Operation and Parts	3A6342	3A6342	3A6342
	Pump	3A6584	3A6583	3A6583





Every Graco purchase comes  
with A+ Customer Service.

Questions?  
Call (844) 241-9499

**For more information visit [graco.com](http://graco.com)**

©2020 Graco Inc. 344381 Rev. E 12/20 All written and visual data contained in this document are based on the latest product information available at the time of publication. Graco reserves the right to make changes at any time without notice. Trademarks are referenced herein for identification purposes only. Trademarks are referenced herein for identification purposes only. DeWALT® and the DeWALT Logo are trademarks of DeWALT Industrial Tool Co. and are used under license. All trademarks are the property of their respective owners. Product covered by issued and pending patents, see [graco.com/patents](http://graco.com/patents).